

## Indonesia - Lombok Strait, Flores Sea

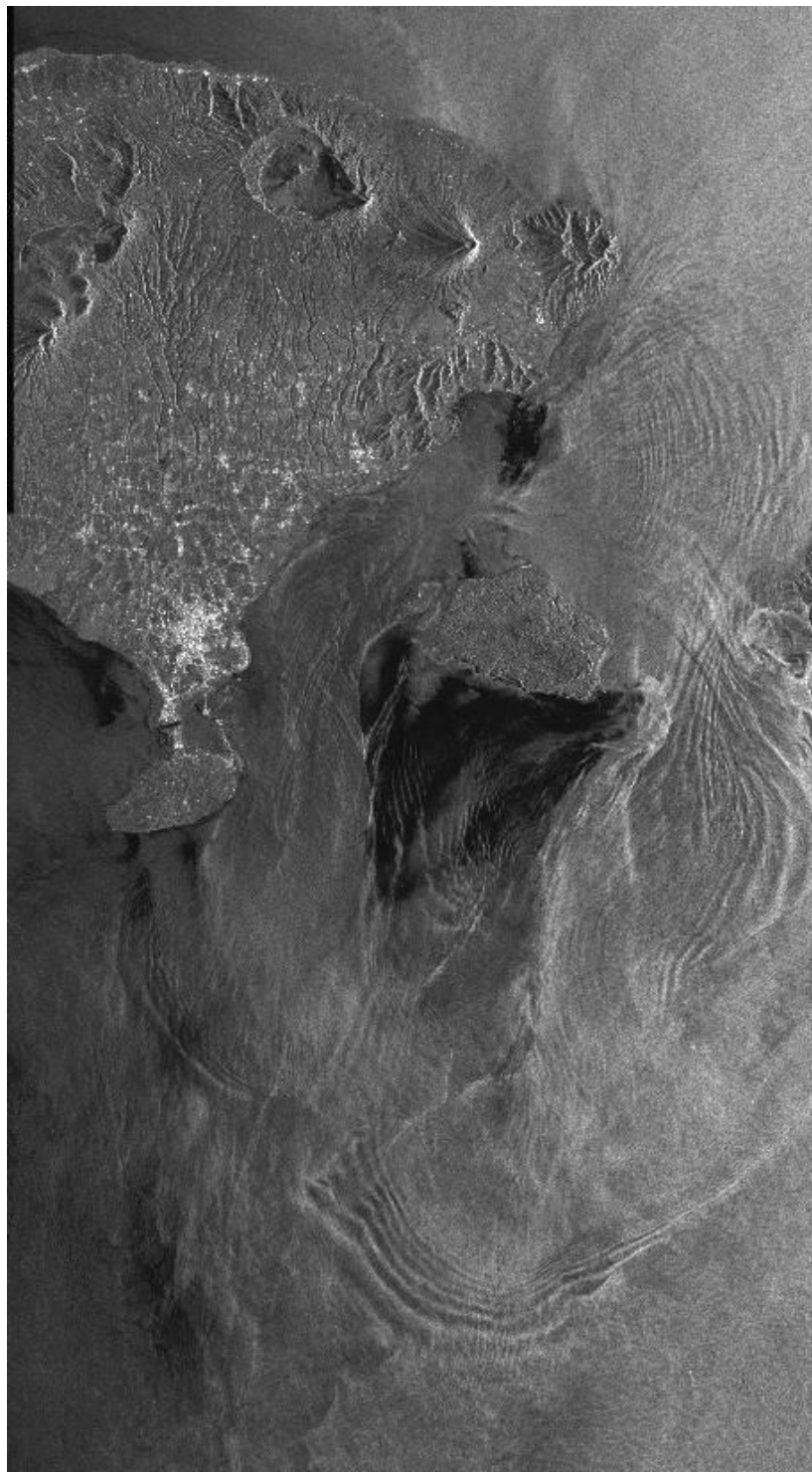


Figure 1. ERS-2 C-Band VV SAR image of Bali Island and the Lombok Strait collected on October 1, 1997 at 02:31 GMT (Orbit: 12797, Frames: 3771, 3789, 3807). Image dimensions are 100 km x 181 km centered at 39°06' S. 115°21' E. The image shows internal wave packets radiating both north and south from passage between Nusa Penida and Lombok islands. The most likely source is the shallow sills between the islands. [From The Tropical and Subtropical Ocean Viewed by ERS SAR <http://www.ifm.uni-hamburg.de/ers-sar/>]

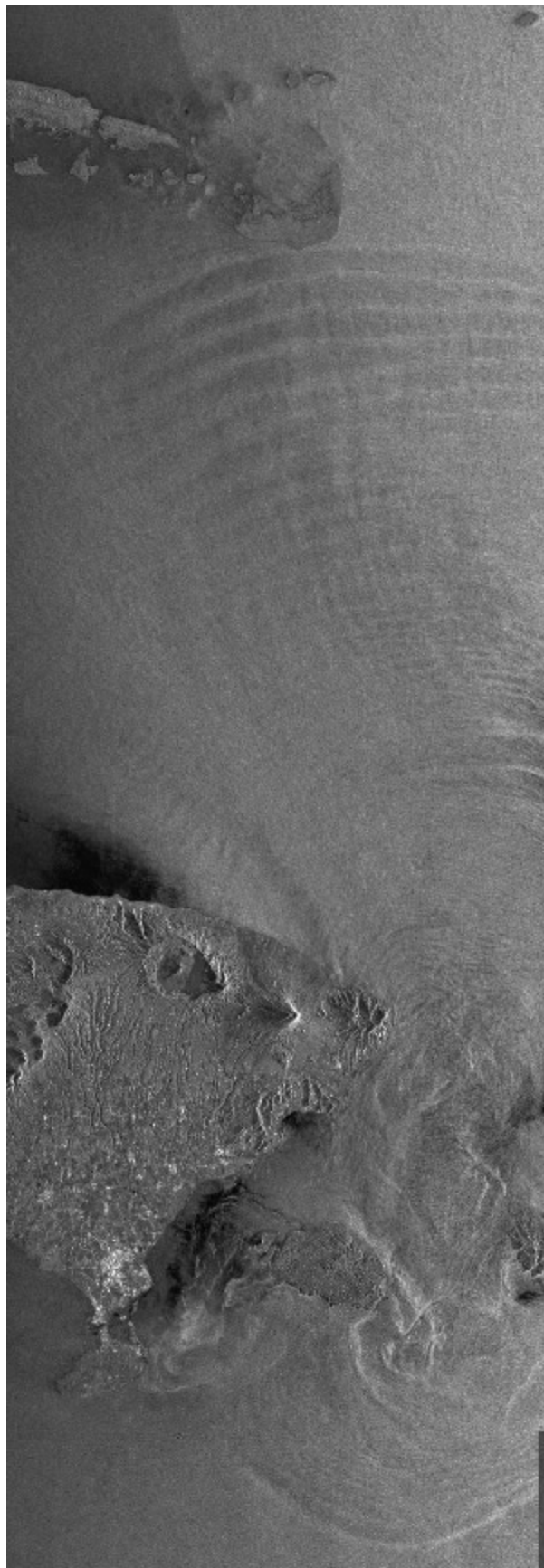


Figure 2. ERS-1 C-Band VV SAR image of Bali Sea collected on April 23, 1996 at 02:32 GMT (Orbit: 24955, Frames: 3753, 3771, 3789). Image dimensions are 100 km x 300 km centered at 8°11' S. 115°35' E. The image shows an internal wave packets radiating north into the Bali Sea and approaching the Kanagan Island and coral reefs. The length of the packet is approximately 80 km and the leading wavelength is almost 6 km. [From The Tropical and Subtropical Ocean Viewed by ERS SAR <http://www.ifm.uni-hamburg.de/ers-sar/>]

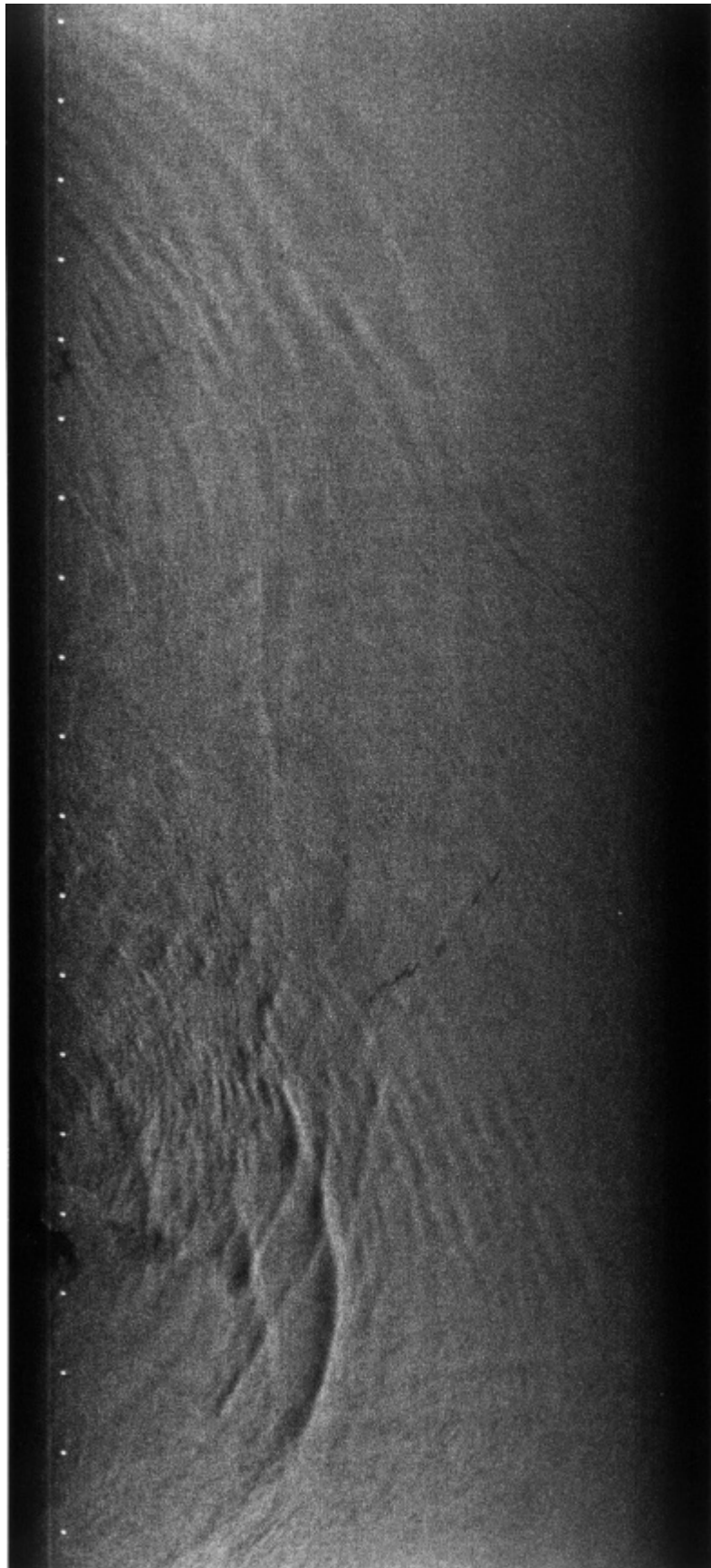


Figure 3. SIR-B L-band HH SAR image of Flores Sea collected in October 1994 (DT 35-36). Image dimensions are 50 km x 100 km centered near 7° S, 118° E. The image shows internal wave signatures from a number of packets and a variety of soliton - soliton interaction.

**THIS PAGE INTENTIONALLY LEFT BLANK**