

India - West Coast

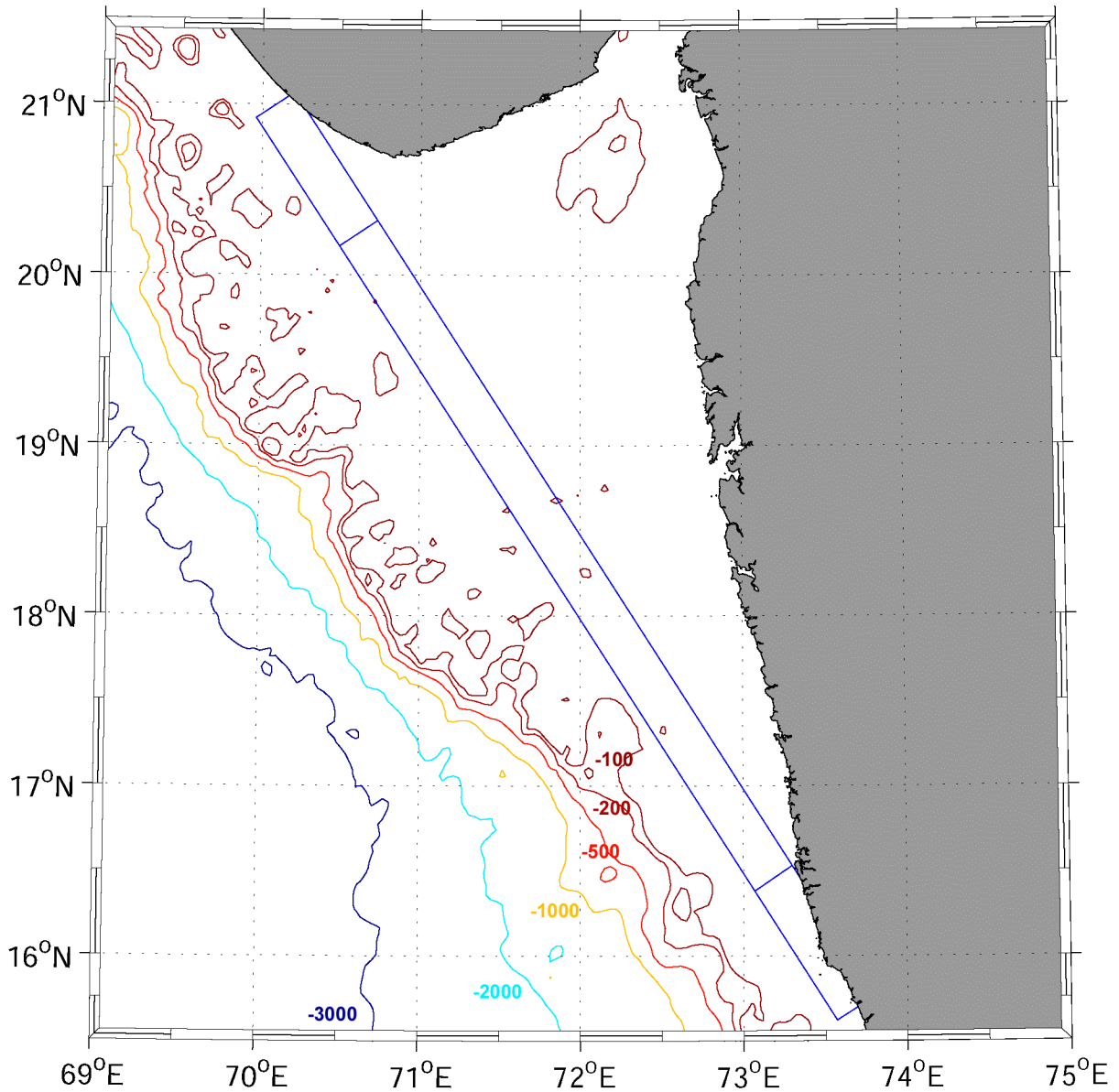


Figure 1. Bathymetry map showing the continental shelf off the west coast of India. The blue box is the swath of the SIR-C SAR which collected imagery (Figures 2a - 2g) over the region on October 10, 1994. (Bathymetry derived from Smith and Sandwell version 8.2).

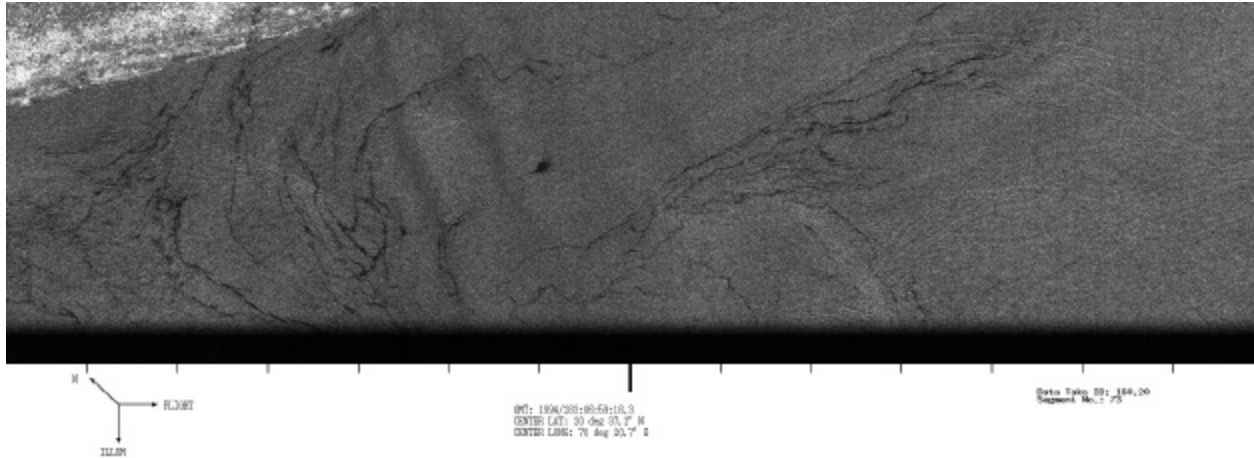


Figure 2a

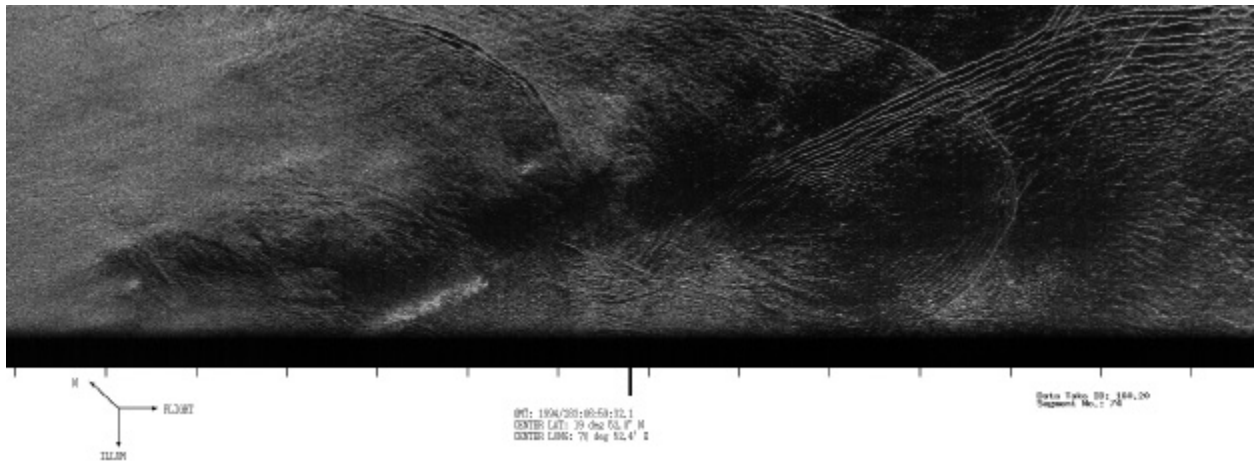


Figure 2b

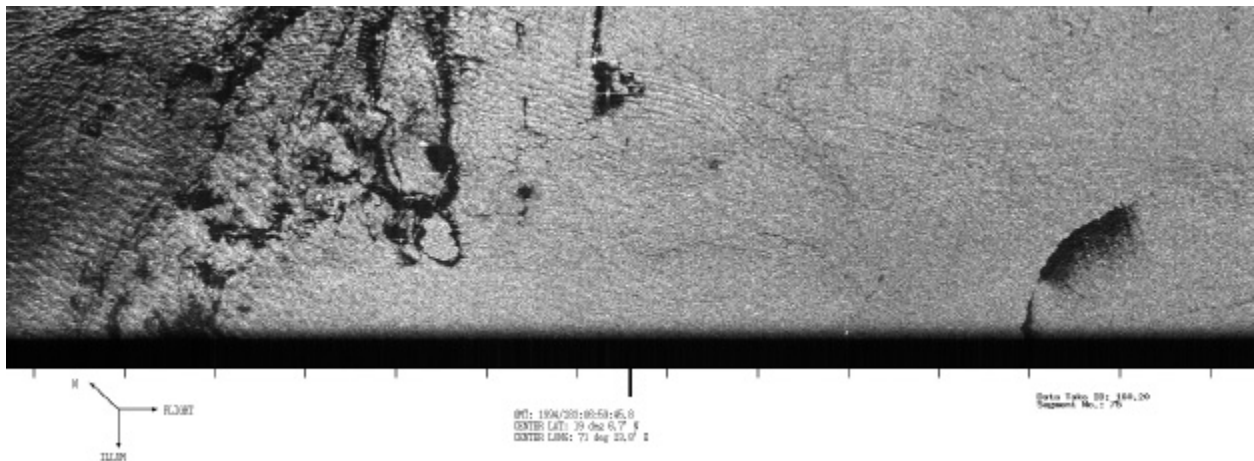


Figure 2c

Figures 2a - 2f. SIR-C Survey imagery showing internal waves of the continental shelf off the west coast of India. (DT160.2 segments 73 to 79). The internal wave signatures can be seen along the entire 700 km length of the imagery among other phenomena including surface slicks, variable wind and atmospheric convection. Each individual segment is 20.5 km x 99.9 km.

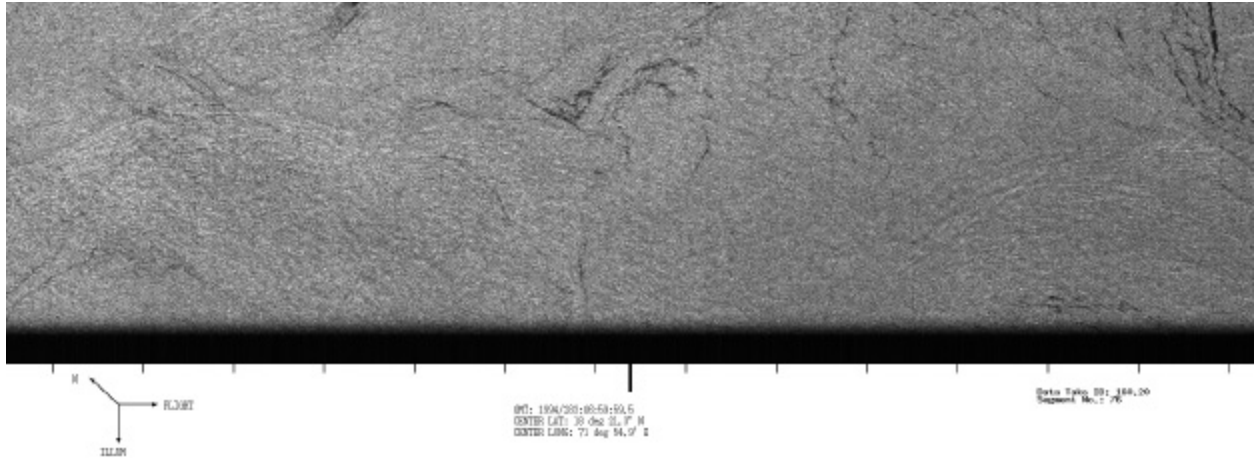


Figure 2d

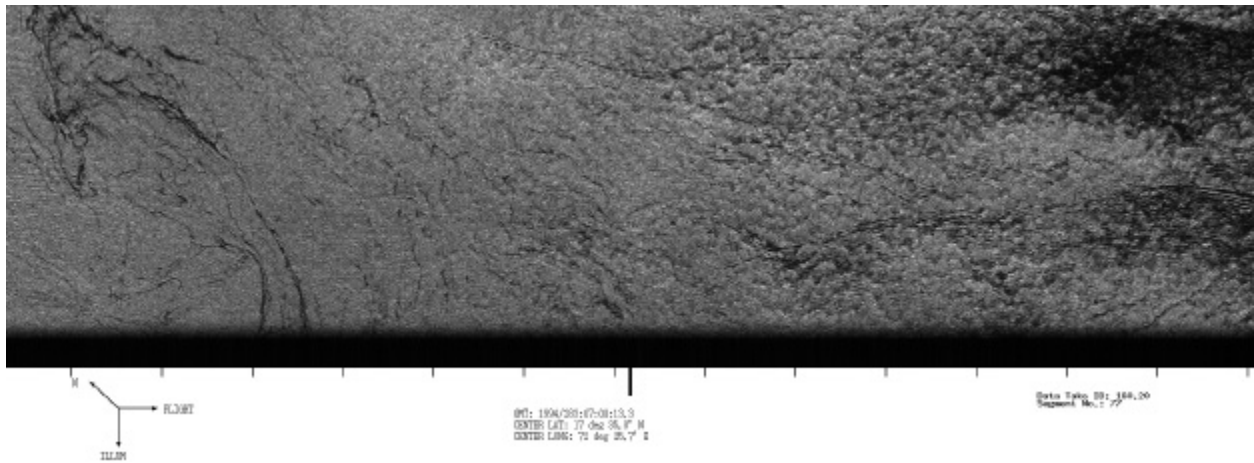


Figure 2e

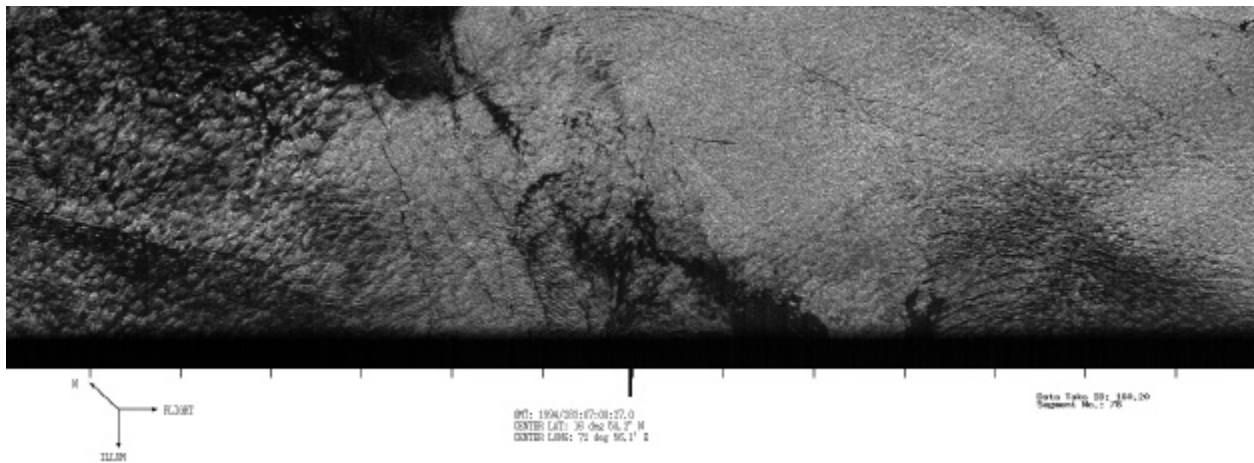


Figure 2f

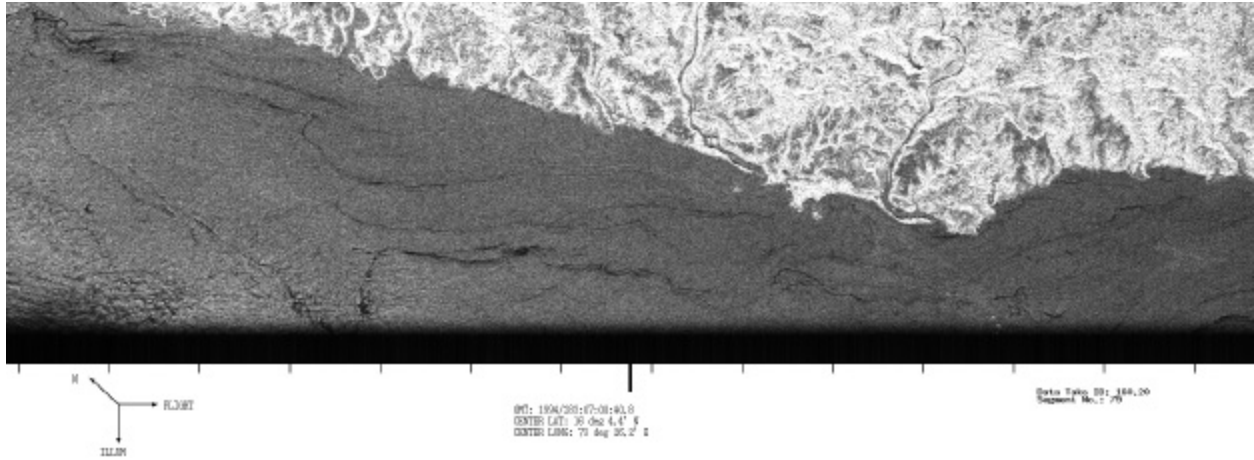


Figure 2g