

Morocco - Atlantic Coast

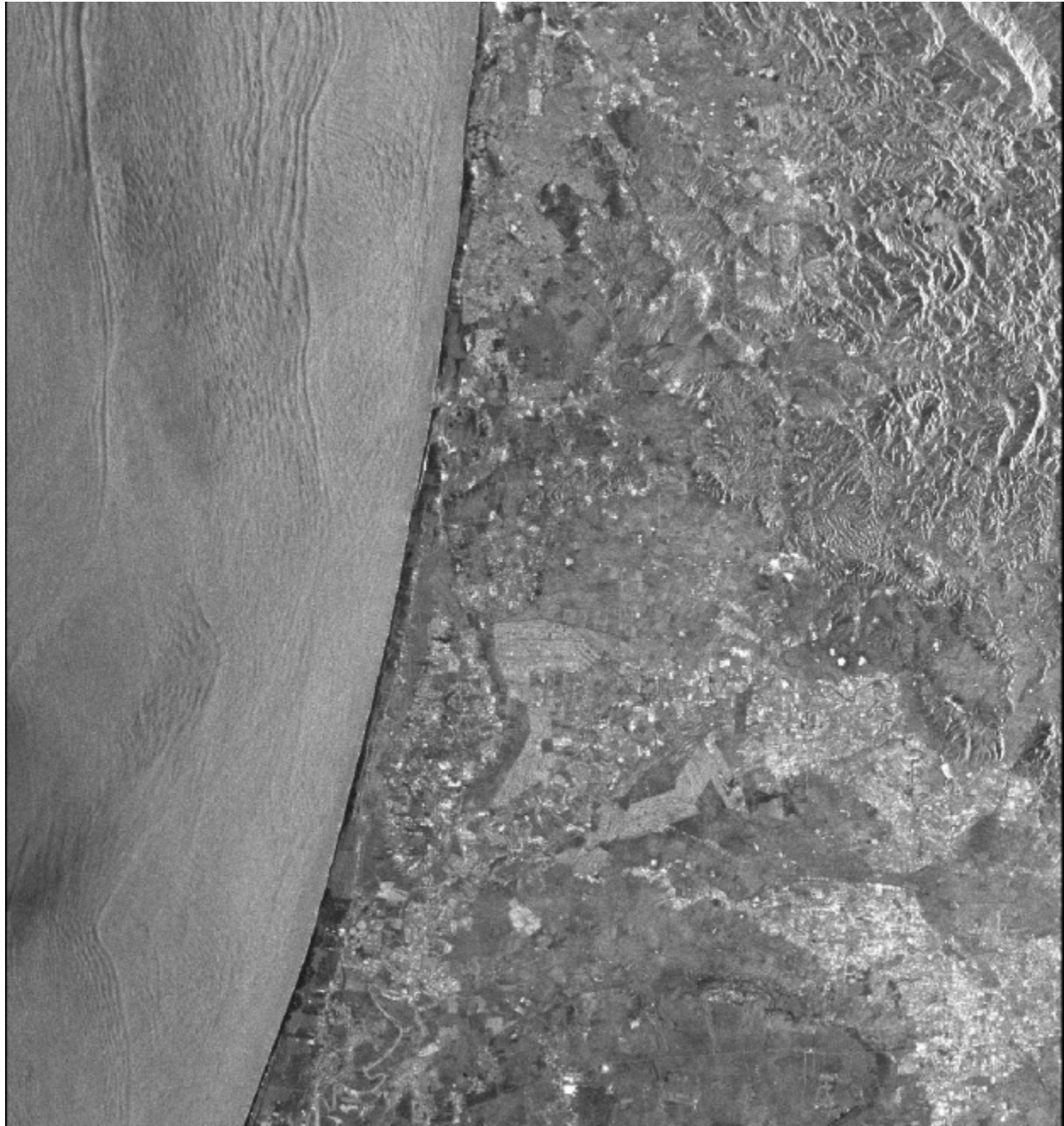


Figure 1. ERS-1 C-Band VV SAR image of continental shelf solitons off the west coast of Morocco collected on September 25, 1992 at 11:05 GMT (Orbit: 6251, Frames: 2907). Image dimensions are 100 km x 100 km centered at 34°44' N, 6°15' W. The internal wave signatures are very similar to those observed off the west coast of Portugal. [ERS-1 image ©ESA 1992, from The Tropical and Subtropical Ocean Viewed by ERS SAR <http://www.ifm.uni-hamburg.de/ers-sar/>]

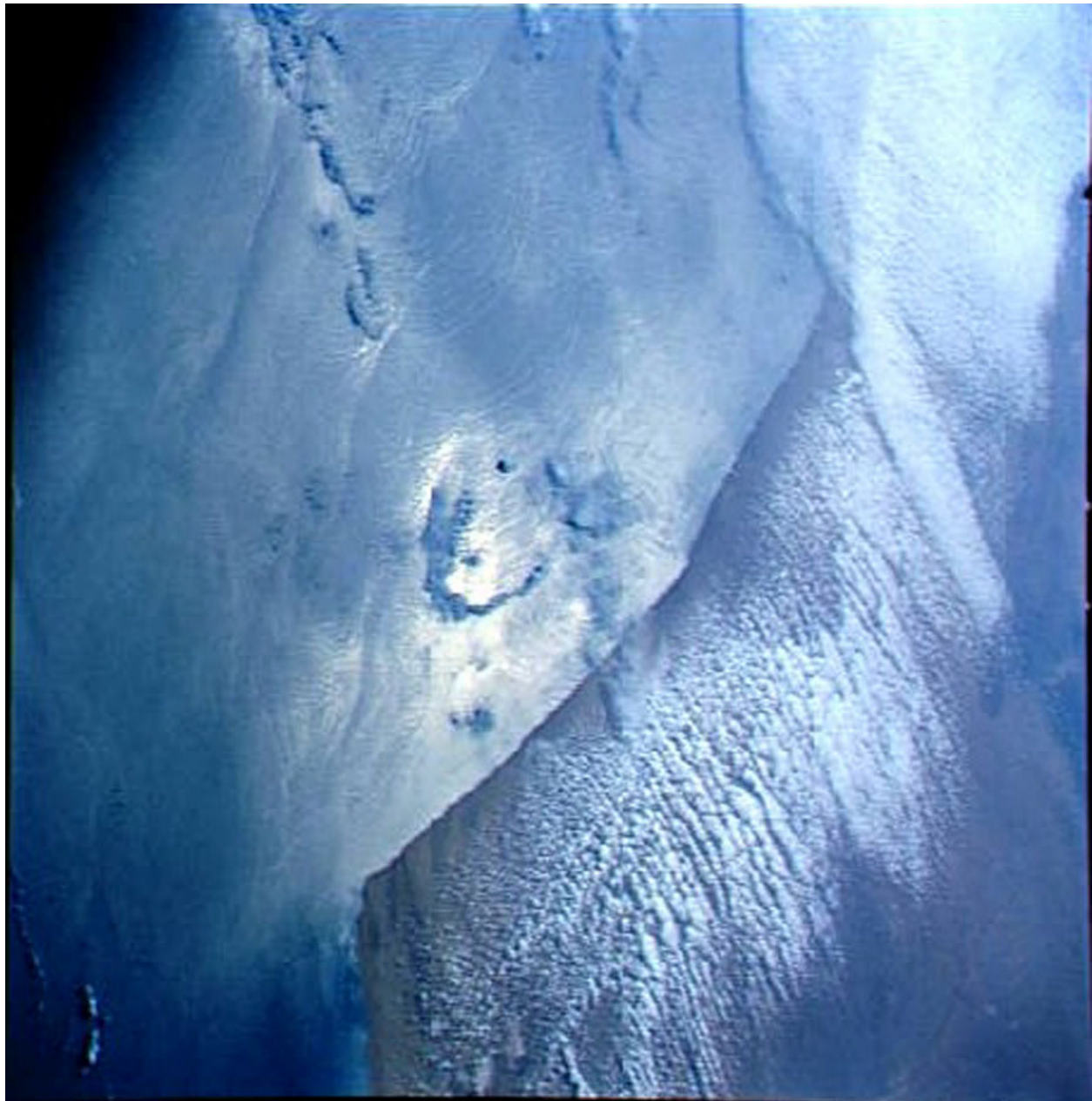


Figure 2. Space Shuttle Photograph (STS046-81-70) taken in August 2, 1992, GMT 09:25. The image shows internal wave activity off the southwest coast of Morocco. Image center is near 28.5° N., 11.5° W. Image courtesy of Earth Sciences and Image Analysis Laboratory, NASA Johnson Space Center (<http://eol.jsc.nasa.gov>)

Related Publications

Vlasenko, V.L., V.A. Ivanov, I.G. Krasin and A.D. Lisichenok, 1996, Study of intensive internal waves in the shelf zone of Morocco, *Physical Oceanography*, Volume 7, No. 4, pp. 281- 298,